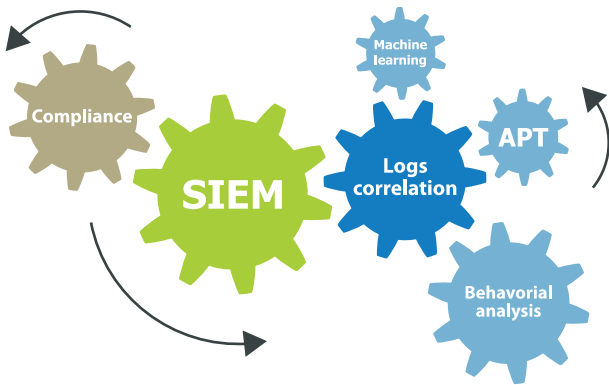




CYBER SECURITY SUPERVISION CENTER

CS2: mutualised SOC within everyone's reach

Detect **attacks**, find **vulnerabilities** and analyze **suspicious behaviors** that affect your Information System, by joining AntemetA's mutualised French SOC!



A SOC TO MASTER YOUR IT SECURITY

At AntemetA's Security Operations Center (SOC), powerful tools (**SIEM**) are used to detect cyber attacks. In case of cyber security alerts, our cyber security engineers **analyze, qualife** and assist you in the **remediation** of attacks or vulnerabilities.

THE MUTUALISATION TO BE CYBER-SECURE AT THE RIGHT PRICE

By outsourcing your cyber security and joining CS2, our mutualised SOC, get:

- efficient **equipment** (without investment from your side)
- **skills and experiences** of our cyber security engineers
- **costs sharing** with other « SOC as a Service » customers
- continuous **cyber security effort** (update, training...)
- high impact and low occurrence **risk management** optimization



OUTSOURCING TO BE MORE SECURE

By choosing AntemetA mutualised SOC to manage your information system, you provide an operational and experienced cyber security team to your company.

- Your **security policy** will be based on real events whose have impacted your Information System.
- Your **IT security budget** will be focused more precisely on the cyber threats that target you.
- Your **data protection** will be optimized by a better detection, reaction and remediation of cyber attacks.
- Your **information confidentiality** is ensured by the ISO 27001 certification of AntemetA Cloud Services.



To support progressively your needs, our solution of **"SOC as a Service"** is made around **chronological modules**.

- Module **1 NETWORKS**
- Module **2 SERVERS**
- Module **3 USERS**

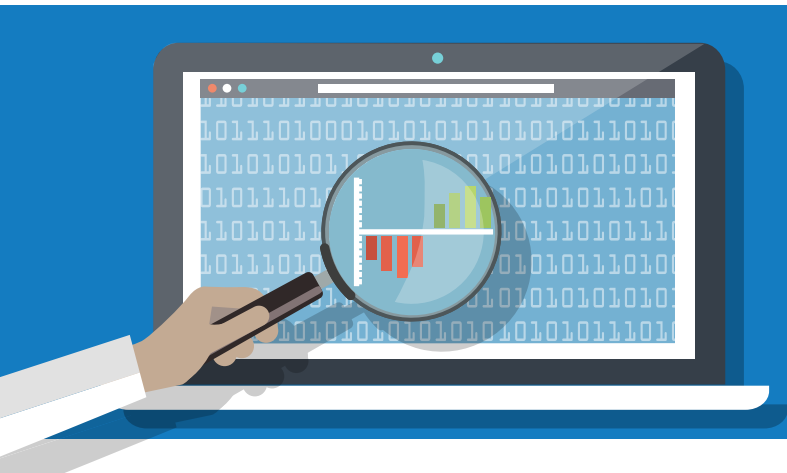
From perimeter defense to active data protection, our engineers teams analyze, qualify and assist you in networks, servers and user workstations incidents remediation.

For **enhanced protection** of your systems, we offer to **supplement your security** with two specific modules.

- Module **4 VULNERABILITY MANAGEMENT**
- Module **5 ENHANCED APPLICATION PROTECTION**

Information System internal and external vulnerabilities detection and attack surface reduction (remediation).

Customized detection of specific attack scenarios threatening your critical business applications.



FOCUS ON... GOVERNANCE



Support you in the **results exploitation**.
Help you improve and optimize your **security policy**.



Headquarters in Paris area, France

Antemeta
5 rue Jacqueline Auriol
78 280 Guyancourt

+33 1 30 62 33 22

info@antemeta.fr

www.antemeta.com



NETWORK

INFRASTRUCTURE

CYBER SECURITY

DATA MANAGEMENT

PLATFORMS & SOLUTIONS